

# VELA

PROFESSIONAL SDI SIGNAL MONITORING

## SDI & VANC Monitor

HD SDI

SD SDI

Vela Research is proud to introduce the latest module addition to the ArgoNavis Encoder and Decoder and the HDPro blade product line - the SDI & VANC Monitor. The SDI & VANC Monitor allows operators to monitor vital aspects of their SDI signal in real time providing critical information on video, audio, and ancillary data necessary to ensure regulatory compliance and data integrity.

The SDI & VANC monitor allows the operator to monitor the SDI video in real time with a 'snapshot' feature to capture the current video image as a jpeg for reference or distribution.

Up to 8 channels of SDI Audio can be monitored in real time and High/Low level setpoints can be created to alert the operator should any audio level exceeds an upper or lower threshold for a user defined period of time. Channels can be selected individually for monitoring or all channels can be monitored simultaneously.

Decode and Monitor 608 and 708 Closed Captions from the VANC in real time and view both types of captions simultaneously while not obstructing the video with open captions. Users can decode and view Active Format Descriptor data in real time and get a pictorial representation of what effect the AFD value will have on the video signal. Determine the presence and frequency of Broadcast Flag VANC data and also whether Dolby Audio Metadata exists in the VANC.

The SDI and VANC monitor is a software module that can be added to the existing ArgoNavis Encoder or Decoder platform or a hardware/software module that can added to the CineView HDPro Blade. The SDI and VANC Monitor comes with an intuitive, easy to use interface for convenient operation.

## AT A GLANCE

**MONITOR HD OR SD SDI**

**MONITOR VIDEO**

**MONITOR 8 CHANNELS OF EMBEDDED AUDIO**

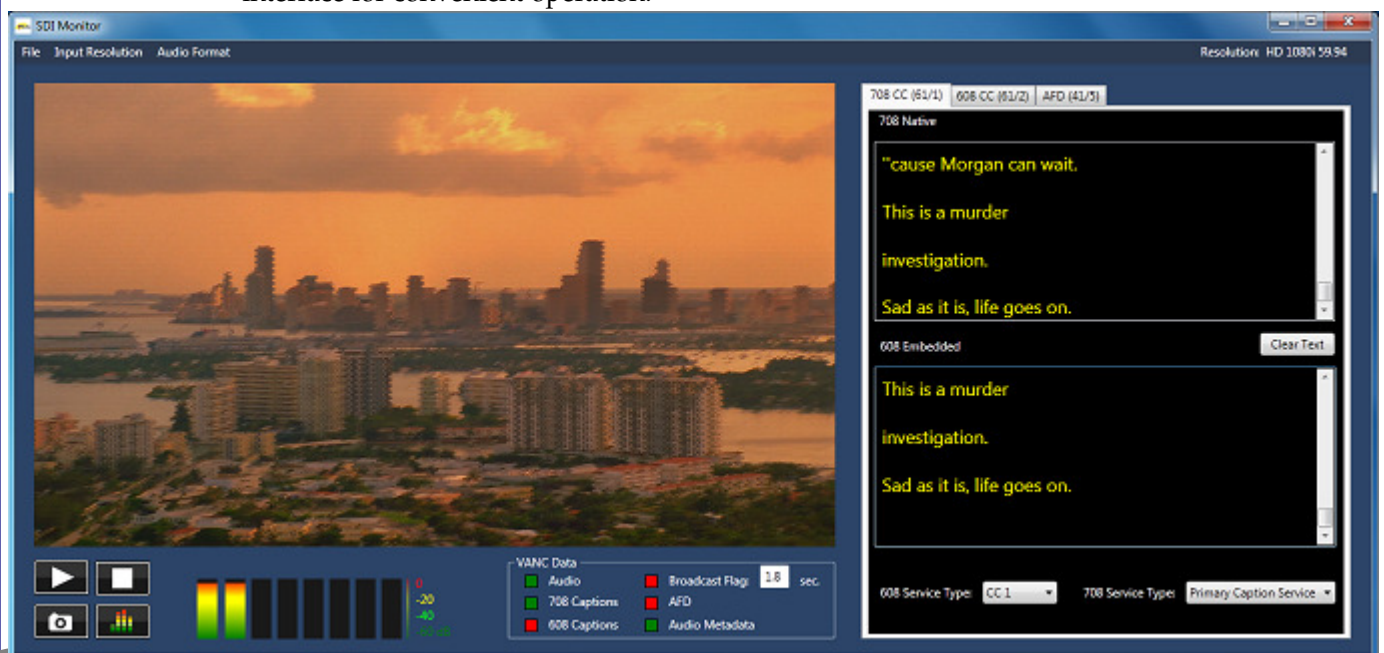
**SET HIGH/LOW ALARMS FOR AUDIO LEVELS**

**MONITOR 608 AND 708 CLOSED CAPTIONING**

**MONITOR ACTIVE FORMAT DESCRIPTOR**

**MONITOR DOLBY AUDIO METADATA**

**MONITOR BROADCAST FLAG DATA**

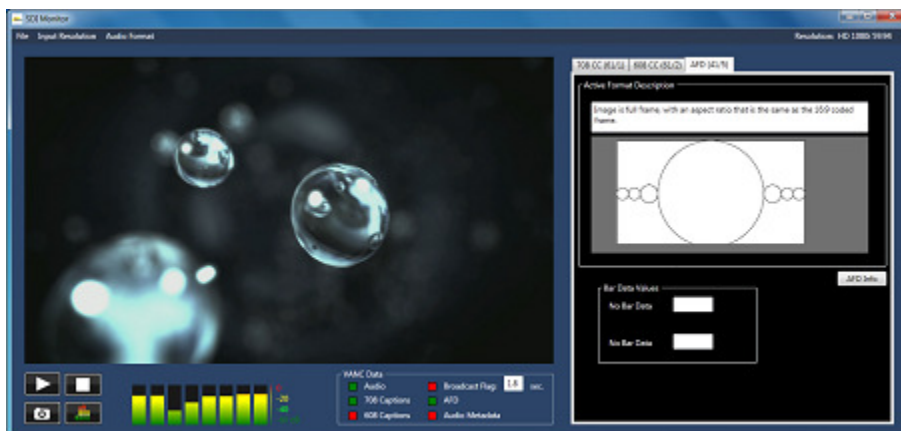


# SDI & VANC Monitor

PROFESSIONAL SDI SIGNAL MONITORING

## FEATURES

- HD/SD SDI monitoring
- View SDI video real time
- Take a snapshot of the SDI video
- Monitor up to 8 channels of SDI embedded audio
- Set High/Low Alarms for individual or all audio channels
- Decode and display 708 and 608 CC in real time
- Decode and display AFD in real time
- Decode and display Broadcast Flag and Dolby Audio Metadata in real time.



## SPECIFICATIONS

### VIDEO

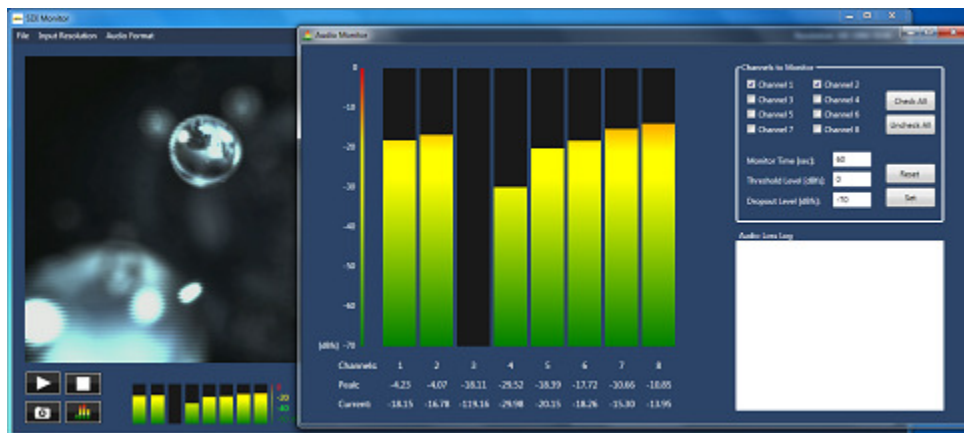
- Serial Digital Interface (SDI) video: SMPTE 292M (HD) & SMPTE 259M (SD)
- Genlock input: Composite, 1.0V p-p, 75 ohm

### AUDIO

- Embedded Audio (16 Channels)

### DISPLAY RESOLUTIONS

- 1080P: 24
- 1080i: 25, 29.97
- 720p: 50, 59.94
- 480i: 29.97
- 576i: 25



5540 Rio Vista Dr. • Clearwater FL 33760 • Phone 727-507-5300 • Fax 727-507-5312

[www.vela.com](http://www.vela.com)

Vela, CineView, MediaAdvantage and PlayAdvantage are trademarks or registered trademarks of Vela Research LP. Dolby is a trademark of Dolby Laboratories. Other product names mentioned are used for identification purposes only and may be trademarks of their respective companies. All information contained herein is accurate at time of printing and is subject to change without notice. ©2011 Vela LP. All rights reserved. Rev.12-2005.

